

# JOIN EDUCATION LEADERSHIP INITIATIVE

Your investment directly impacts the lives and Education Success of young people in our community. **As a member of ELI, you'll receive**

Insight into your investment's impact on addressing challenges for pre-teens and teenagers.

Connections for new business, leadership, and career opportunities.

Exclusive engagement through committees, volunteering, and leadership events.

Potential tax savings from making a charitable investment in our community

Networking with community leaders who have a similar interest in advancing education in central Iowa



**Support Education  
Success with a  
donation to ELI today.**

Join by directing a contribution through your workplace campaign or donate today at:

**[unitedwaydm.org/eli](https://unitedwaydm.org/eli)**

# ELI EDUCATION LEADERSHIP INITIATIVE



Is a network of ambitious leaders who ensure students are supported during middle school so they're not just ready, but excited to graduate high school with a plan for their future.



# What if Every Middle School Student had a Chance to Graduate with a Plan for their Future?

Imagine the impact those students could make on the future of our workforce, economy, and community.

**2 out of 5** **25%**

low income students don't have a plan for their future.

Iowa Department of Education

of central Iowa middle schoolers have had a prolonged period of feeling so sad or hopeless they stopped doing some usual activities

2021 Iowa Youth Survey

## ELI invests in strategies proven to help central Iowa students:

- Promoting a successful transition into middle school for at-risk children.
- Providing supportive services for at-risk students and families.
- Promoting and coordinating activities that reduce summer learning loss.
- Providing quality and engaging out-of-school opportunities.
- Developing programs that support positive physical and mental health.

# EVERY CHALLENGE HAS A SOLUTION



Like a puzzle, the pieces that make up the challenges central Iowans face are interconnected. When you make a positive impact on one element, like education, for one student, that impact influences every other area in their life. Think of the impact you can bring to their future!



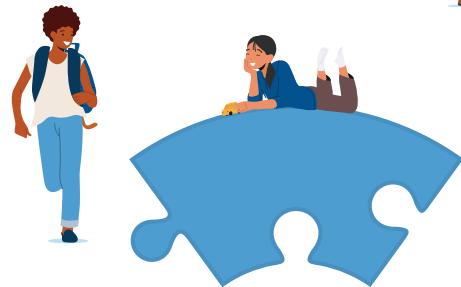
### MORE THAN EDUCATION

Your minimum \$1,000 investment supports students' challenges for better focus in school.



### A VALUABLE TRANSITION

A middle to high school transition ensures graduation with a post-secondary plan.



### HOPE FOR THE FUTURE

Iowa high school graduates, throughout their lifetime, earn **\$700,000** more than those who do not graduate.